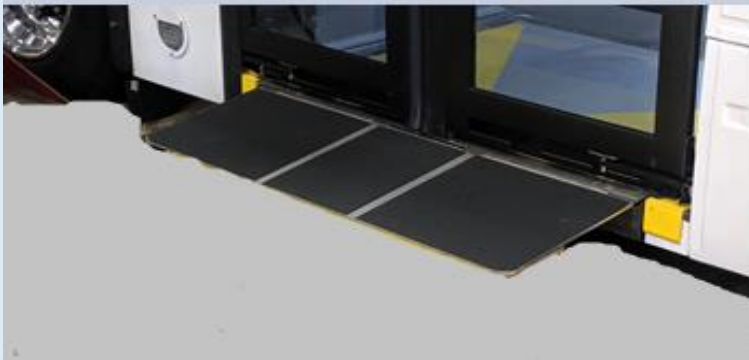




MODEL 7989

BRIDGE PLATE FOR LOW FLOOR TRANSIT BUS



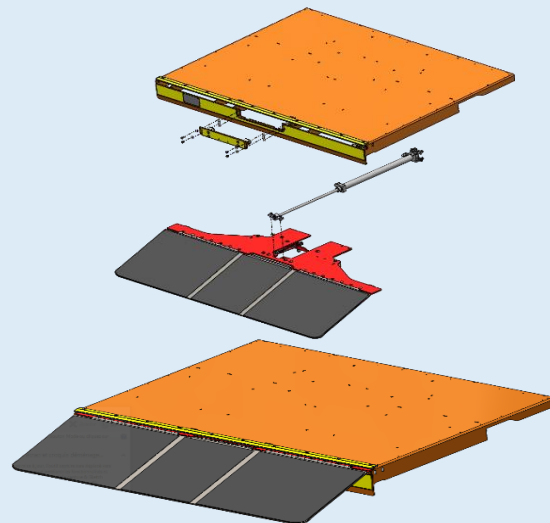
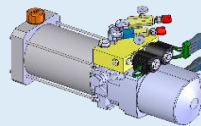
**The simplest
design
=
The highest
reliability**

Consists of only 4 major components :

- Mobile plate
- Bridge plate frame/floor
- Hydraulic cylinder
- Access door

Actuated by a 24 Vdc compact HPU

(Hydraulic Power Unit)



Calmo bridge plate requires :

- No complex adjustments
- No lubrication
- No frequent maintenance

Bridge plate actuation specifications

- Can be deployed in 5 sec and retracted in 5 sec
- Can be deployed and retracted when the vehicle doors are still closed

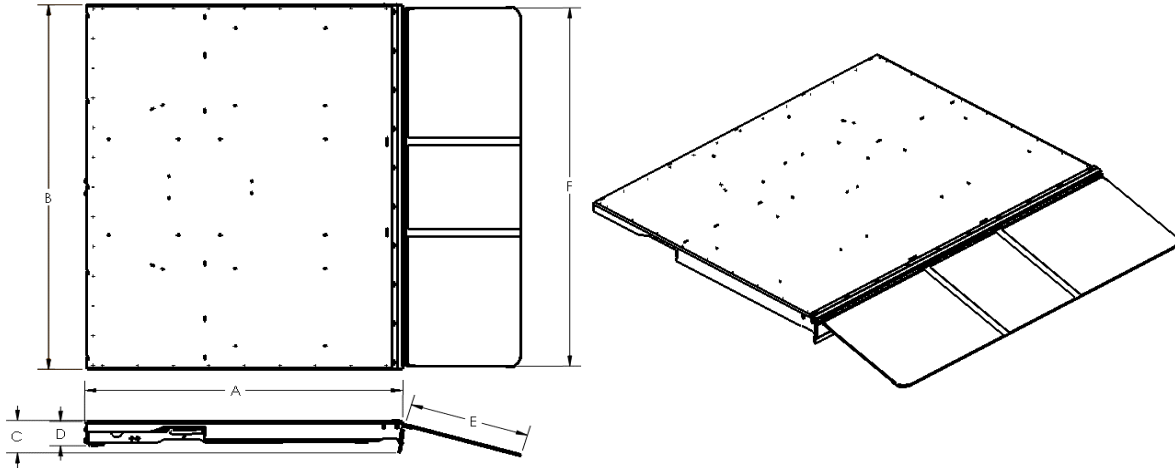
Calmo Inc.
100 Walnut Street, Champlain, NY
450-462-3130

www.calmoinc.com

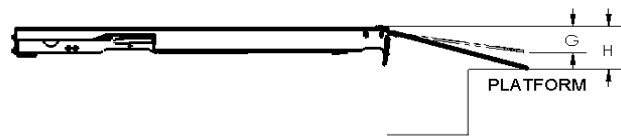


MODEL 7989

**BRIDGE PLATE
TECHNICAL DATASHEET**



Slope		1:6 from step height of 2-7/8"		
Power source		24vdc Hydraulic power unit		
Total weight		155 Lbs (with HPU)		
A	Overall Length	35-1/4" (895 mm)	E Bridge plate length	13-3/8" (340 mm)
B	Overall Width	44-3/4" (1137mm)	F Bridge plate width	44" (1118 mm)
C	Overall thickness	4" (101 mm)	G 1:6 deployment step	2-5/8" (67 mm)
D	Frame thickness	3" (76mm)	H Max. deployment step	4-1/8" (105 mm)



- Load capacity : 1000 lb
- Bridge plate structure is all stainless steel
- A special tool is available for manual override in case of power failure
- No chains, no linear guides and no cams
- Temperature operating range: from -30°C to 46°C

Calmo Inc.
100 Walnut Street, Champlain, NY
450-462-3130
www.calmoinc.com